



# Truck Route - Range Road 235A to Highway 18

Regular Council | June 23, 2026

Request for Decision presentation

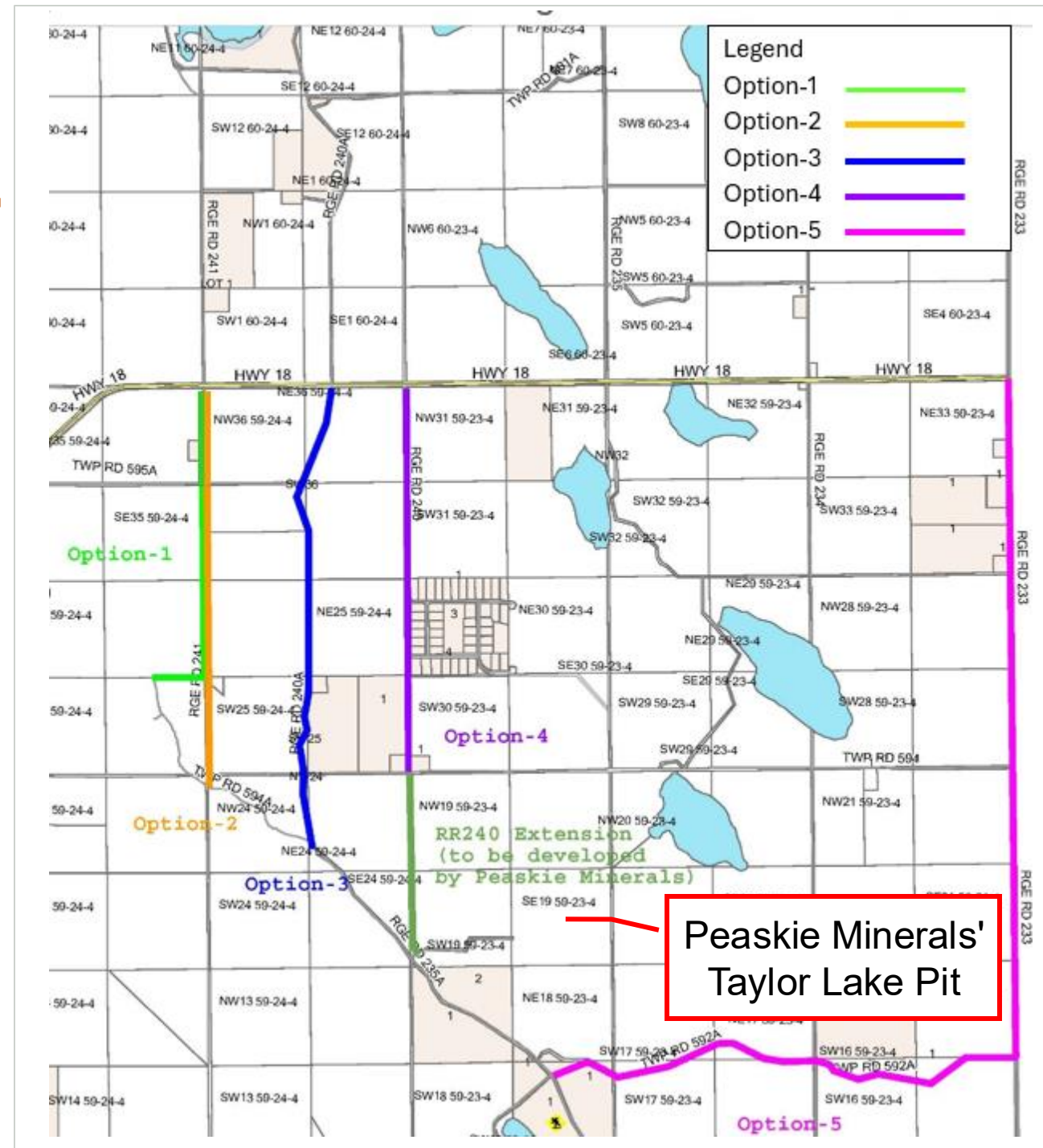
# Decision Before Council

## Council is being asked to

Select one of the five route options as the truck access route to Highway 18.

## Administration recommends



That Council approve Option 4, as it presents fewer overall corridor constraints compared to the other options reviewed.






# Chronology of Events

---

-  **June 2025** RR241A closed; truck traffic redirected to southern routes.
-  **June 2025** Future expansion plans identified in the area.


# Chronology of Events

---

- 
- June 2025** RR241A closed; truck traffic redirected to southern routes.
  - June 2025** Future expansion plans identified in the area.
  - July 2025** RR240 road condition concerns and preliminary review.


# Chronology of Events

---

- 
- June 2025** RR241A closed; truck traffic redirected to southern routes.
  - June 2025** Future expansion plans identified in the area.
  - July 2025** RR240 road condition concerns and preliminary review.
  - Sept. 2025** RR240 preliminary engineering and STIP application RFD


# Chronology of Events

---

- 
- June 2025** RR241A closed; truck traffic redirected to southern routes.
  - June 2025** Future expansion plans identified in the area.
  - July 2025** RR240 road condition concerns and preliminary review.
  - Sept. 2025** RR240 preliminary engineering and STIP application RFD.
  - Mar. 2026** Public open house and feedback received.


# Chronology of Events

---

- 
- June 2025** RR241A closed; truck traffic redirected to southern routes.
  - June 2025** Future expansion plans identified in the area.
  - July 2025** RR240 road condition concerns and preliminary review.
  - Sept. 2025** RR240 preliminary engineering and STIP application RFD
  - Mar. 2026** Public open house and feedback received.
  - Spring 2026** Resident responses, project webpage, and alternate route review.

# Chronology of Events

---



<b>June 2025</b>	RR241A closed; truck traffic redirected to southern routes.
<b>June 2025</b>	Future expansion plans identified in the area.
<b>July 2025</b>	RR240 road condition concerns and preliminary review.
<b>Sept. 2025</b>	RR240 preliminary engineering and STIP application RFD
<b>Mar. 2026</b>	Public open house and feedback received.
<b>Spring 2026</b>	Resident responses, project webpage, and alternate route review.
<b>June 2026</b>	Committee of the Whole reviewed five route options.

# Evaluation Factors

How the route options were reviewed

---

## Engineering and Constructability

Road geometry, grades, structural upgrades, drainage, and ability to support regular truck traffic.

## Land, Jurisdiction and Approvals

Land ownership, right-of-way, Crown/private lands, environmental/regulatory considerations, and municipal jurisdiction.

## Safety, Operational Suitability and Residential Impacts

Highway 18 intersection safety, truck turning movements, visibility, speed, and ongoing operations. Proximity to residences, noise, dust, speed, safety, and long-term maintenance considerations

# Common Constraints

---

## Residential Impacts

Residential properties are located along portions of all the route options.

## Road Upgrades

All options require upgrades before regular truck traffic.

## Geometry / Grades

Some options include steep grades, bends, or additional turning movements.

## ROW / Land

Some options include private land, Crown land, or undeveloped road allowance.

## Environmental

Wetland or watercourse considerations apply to some options.

## Intersection Safety

options require intersection controls or Highway 18 coordination.

No route option is without impacts

# Option 1

Township Road 594A / Range Road 241 / Highway 18

## Opportunities

Existing corridor

Approx. 2.84 km

## Main Constraints

Residential properties along route

Unregistered road / private land / Crown land

Steep grades approaching 9%

Additional truck turning movements

Major geometric and structural upgrades



# Option 1 – Site Photos

Township Road 594A / Range Road 241 / Highway 18



**P1** RR241 – looking south



**P2** RR241 – toward TR595A



**P4** TR594A – toward former RR241A corridor



**P5** TR594A – toward RR241, uphill grade

# Option 2

Township Road 594A / Undeveloped Road Allowance / Range Road 241 / Highway 18

## Opportunities

Same general corridor as Option 1

Avoids some Option 1 land issues

Approx. 3.31 km

## Main Constraints

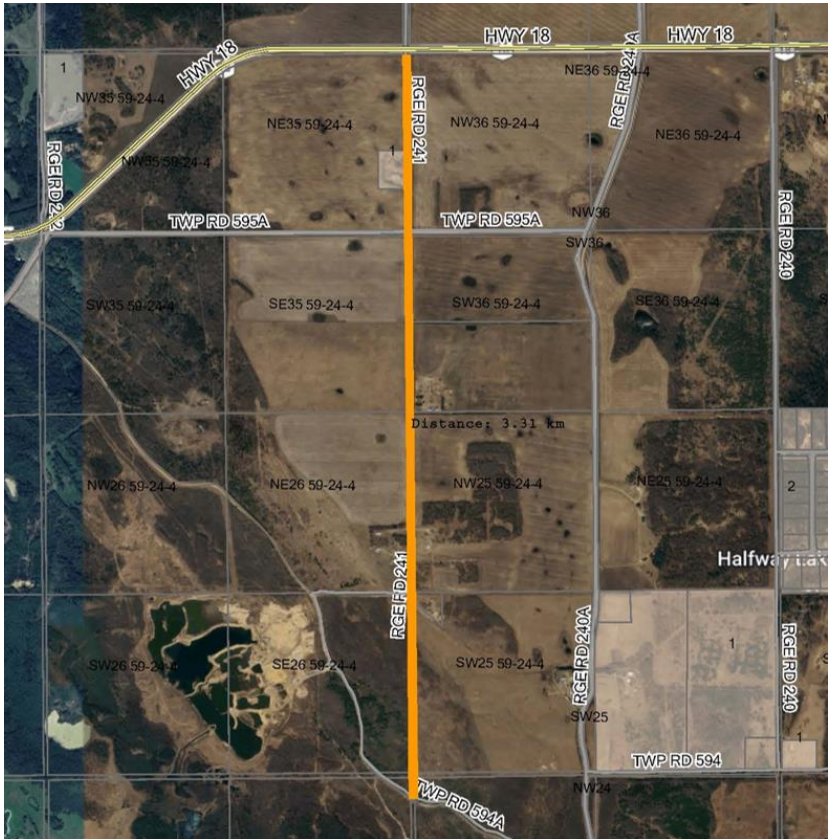
New road allowance development

Wetland features nearby

Steep grades approaching 9%

Two intersections require controls

Major geometric and structural upgrades



# Option 2 – Site Photos

Township Road 594A / Undeveloped Road Allowance / Range Road 241 / Highway 18



**P6** TR594A – toward undeveloped allowance



**P7** Undeveloped Road Allowance – looking south



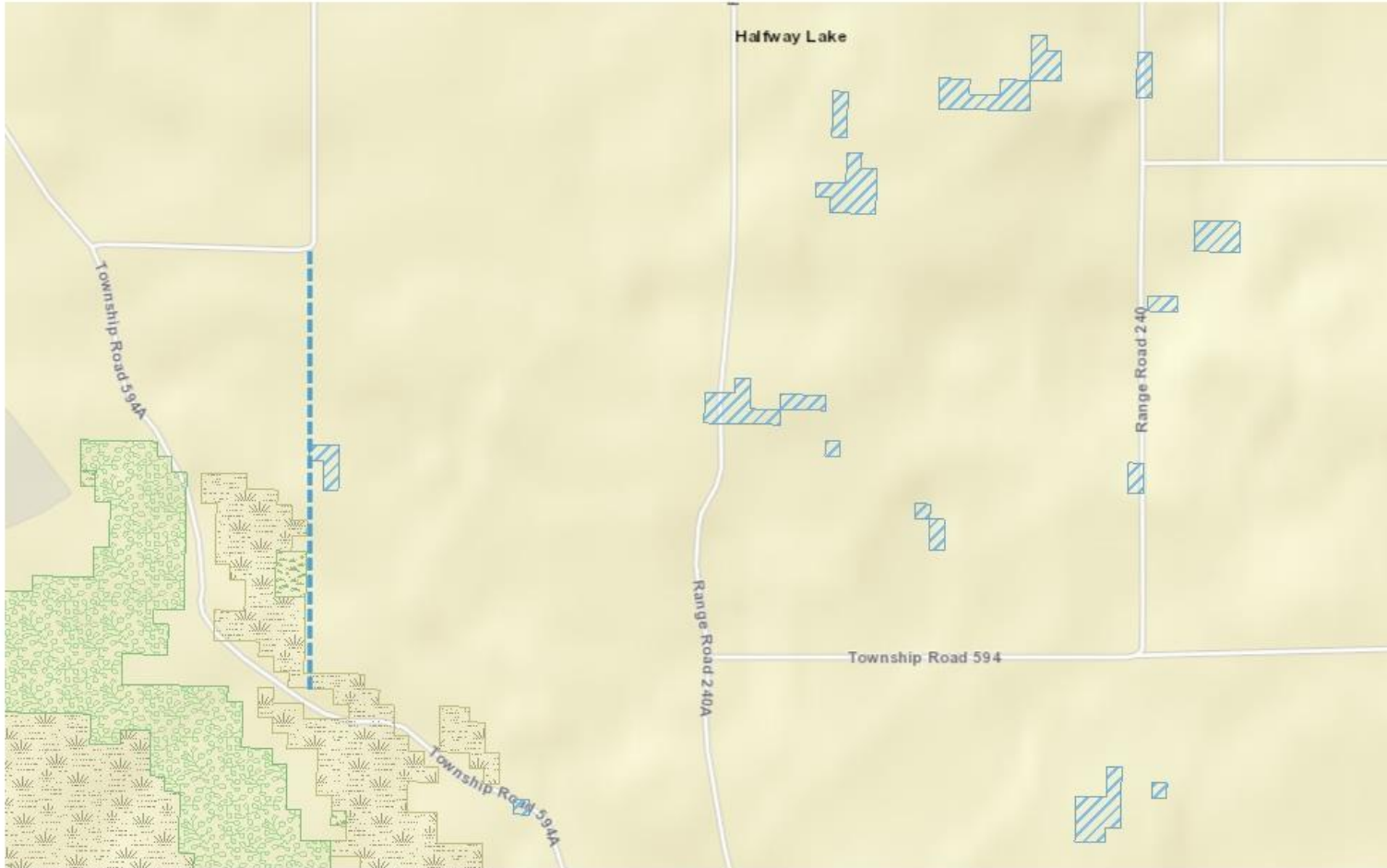
**P8** Undeveloped Road Allowance – farther south



**P9** Undeveloped Road Allowance – uphill view

# Option 2 – Wetland Constraints

Township Road 594A / Undeveloped Road Allowance / Range Road 241 / Highway 18



Friday, June 19, 2026 13:55:56 -06:00

Map Scale: 1: 18,056



While every effort is made to ensure data from this site is accurate and current, the Government of Alberta is not liable for any loss or damage arising from the possession, publication, or use of, that data. This information is provided "as is" without warranty.

## Legend

Alberta Merged Wetland Inventory Class

-  Bog
-  Fen
-  Marsh
-  Open Water
-  Swamp

# Option 3

Range Road 235A / Range Road 240A / Highway 18



## Opportunities

Existing corridor

Approx. 3.93 km

## Main Constraints

Residential properties along route

Historic Athabasca Landing Trail corridor

Poor sightlines at Highway 18

Bends and intersections require ROW review

Geometric and structural upgrades

# Option 3 – Site Photos

Range Road 235A / Range Road 240A / Highway 18



**P11** RR240A / Hwy 18 – looking west



**P12** RR240A – looking south



**P13** RR240A – toward TR595A



**P14** RR240A – looking south

# Option 3 – Site Photos (2)

Range Road 235A / Range Road 240A / Highway 18



**P15** RR240A – looking south



**P16** RR240A – toward TR594

# Option 4

Range Road 240 Extension / Range Road 240 / Highway 18



## Opportunities

Existing public road corridor

Generally straighter alignment

Fewer geometric improvements than others

Approx. 3.2 km

## Main Constraints

Residential properties along route, including Spruce Hill Estates

Road upgrades still required

# Option 4 – Site Photos

Range Road 240 Extension / Range Road 240 / Highway 18



**P17** RR240 / Hwy 18 – looking west



**P18** RR240 / Hwy 18 – looking east



**P19** RR240 – looking south



**P20** RR240 – corridor view

# Option 4 – Site Photos (2)

Range Road 240 Extension / Range Road 240 / Highway 18



P21 RR240 – near Spruce Hill Estates



P22 RR240 – corridor view



P23 TR594 – toward RR240

# Option 5

Township Road 592A / Range Road 233 / Highway 18



## Opportunities

Existing public road corridor

Total route length 9.64 km, approximately 4.0 km within Westlock County

## Main Constraints

Residential properties along route

Approximately 5.64 km is within Thorhild County

Potential watercourse crossings and approvals

Several curves and changes in direction

Geometric and structural upgrades required

# Option 5 – Site Photos

Township Road 592A / Range Road 233 / Highway 18



**P24** TR592A / RR235A – looking east



**P25** TR592A – looking east



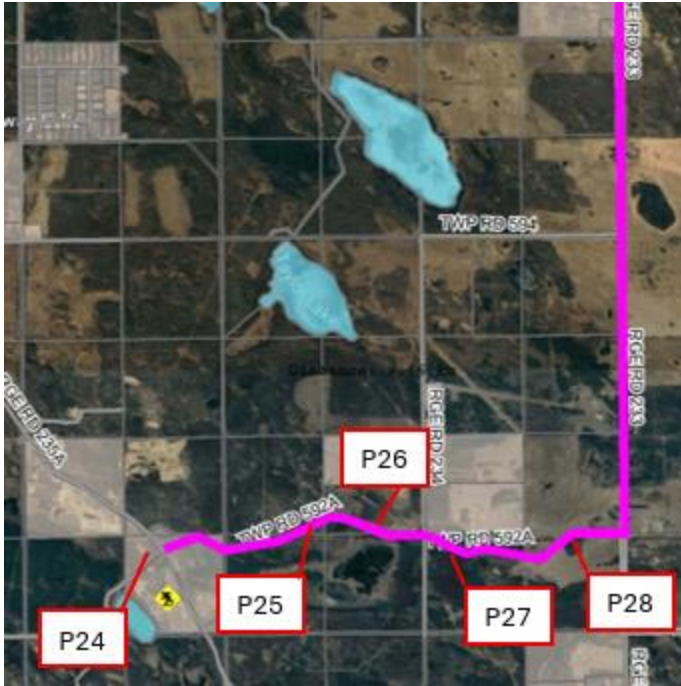
**P26** TR592A – looking east



**P27** TR592A – eastern approach

# Option 5 – Site Photos (2)

Township Road 592A / Range Road 233 / Highway 18



**P28** TR592A – looking west

# Option 5 – Wetland Constraints

Township Road 592A / Range Road 233 / Highway 18



## Legend

Alberta Merged Wetland Inventory Class

-  Bog
-  Fen
-  Marsh
-  Open Water
-  Swamp

Monday, June 22, 2026 15:35:48 -06:00

Map Scale: 1: 36,112



While every effort is made to ensure data from this site is accurate and current, the Government of Alberta is not liable for any loss or damage arising from the possession, publication, or use of, that data. This information is provided "as is" without warranty.

# Recommended Action

Decision before Council

That Council approve Option 4, being the Range Road 240 Extension / Range Road 240 / Highway 18 route, as the selected route for truck access to Highway 18.





# Thank You

The floor is open for questions.